

ST. ANTHONY PUBLIC SCHOOL PARA
UNIT TEST SERIES-2
[(SUBJECT:- COMPUTER SCIENCE) (CLASS:-XII)]

MM:-35

Duration:- 90 min

Note:- All questions are compulsory

Very short Answer type questions		[15x1=15]
Q-1	Name the protocols that are used to send & receive emails.	1
Q-2	Your friend Ranjana complains that somebody has created a fake profile on Facebook and defaming her character with abusive comments and pictures. Identify the type of cybercrime for these situations.	1
Q-3	Name The transmission media best suitable for connecting to hilly areas.	1
Q-4	Write the expanded form of HTTPs also explain meaning of S.	1
Q-5	Write two characteristics of Wi-Fi.	1
Q-6	Which protocol is used to creating a connection with a remote machine?	1
Q-7	Write one characteristics each for 2G and 3G mobile technologies.	1
Q-8	Write two advantages of using an optical fibre cable over an Ethernet cable to connect two service stations, which are 200 m away from each other.	1
Q-9	Give one suitable example of each URL and Domain Name.	1
Q-10	What is the function of Modem?	1
Q-11	Name any two components required for net-working.	1
Q-12	What is VoIP?	1
Q-13	Define the term bandwidth. Give any one unit of bandwidth.	1
Q-14	What is the importance of URL in networking ?	1
Q-15	Identify the type of topology from the following: 1. Each node is connected with the help of a single cable 2. Each node is connected with the help of independent cable with central switching.	1
Short answer type questions		[5x2=10]
Q-16	Differentiate between Viruses and Worms in context of networking and data communication threats.	2
Q-17	Differentiate between Web server and web browser. Write any two popular web browsers	2
Q-18	Expand the following terms: a. SMTP b. XML c. LAN d. IPR	2
Q-19	Illustrate the layout for connecting 5 computers in a bus and a star topology of networks.	2
Q-20	Name the network tools used in the given situation. a) To troubleshoot internet connection problem b) To see IP address associated with domain name c) To test your internet speed d) To lookup registration record associated with domain name	2

Long answer type questions

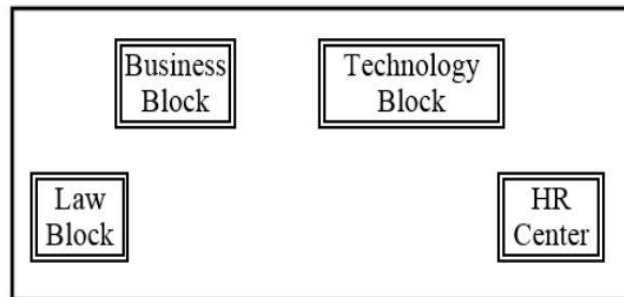
[2x3=6]

Q-21	What is OSI Reference model compare it with TCP/IP model. OR Differentiate between Guided and Unguided transmission medium with their advantages and disadvantages.	3
Q-22	Differentiate between packet switching and circuit switching. OR Explain any three network topologies with diagram.	3

High Order Thinking questions

[4x1=4]

Q-23	MyPace University is setting up its academic blocks at Naya Raipur and is planning to set up a network. The University has 3 academic blocks and one Human Resource Center as shown in the diagram below:	4
------	---	---



Center to Center distances between various blocks/center is as follows:

Law Block to business Block	40m
Law block to Technology Block	80m
Law Block to HR center	105m
Business Block to technology Block	30m
Business Block to HR Center	35m
Technology block to HR center	15m

Number of computers in each of the blocks/Center is as follows:

Law Block	15
Technology Block	40
HR center	115
Business Block	25

- Suggest the most suitable place (i.e., Block/Center) to install the server of this University with a suitable reason.
- Suggest an ideal layout for connecting these blocks/centers for a wired connectivity.
- The university is planning to connect its admission office in Delhi, which is more than 1250km from university. Which type of network out of LAN, MAN, or WAN will be formed? Justify your answer.
- Suggest the placement of a Repeater in the network with justification.